

ABBYY FineReader PDF

Licensing Overview

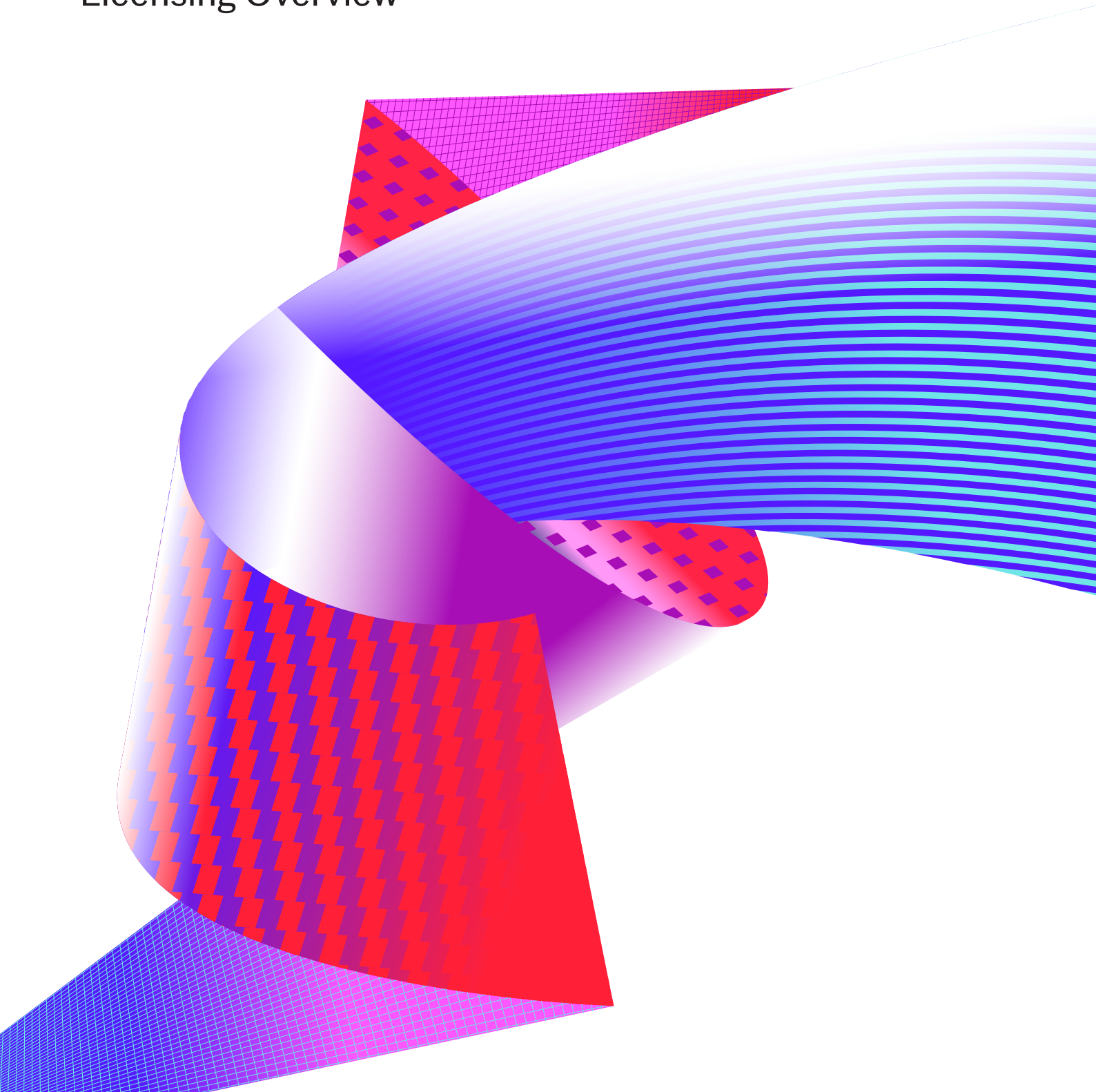


Table of contents

ABBYY FineReader PDF License Types	3
Standalone	7
Per Seat	8
Concurrent	11
Remote User	15
Site	17
Trial Licenses	20

ABBYY FineReader PDF License Types

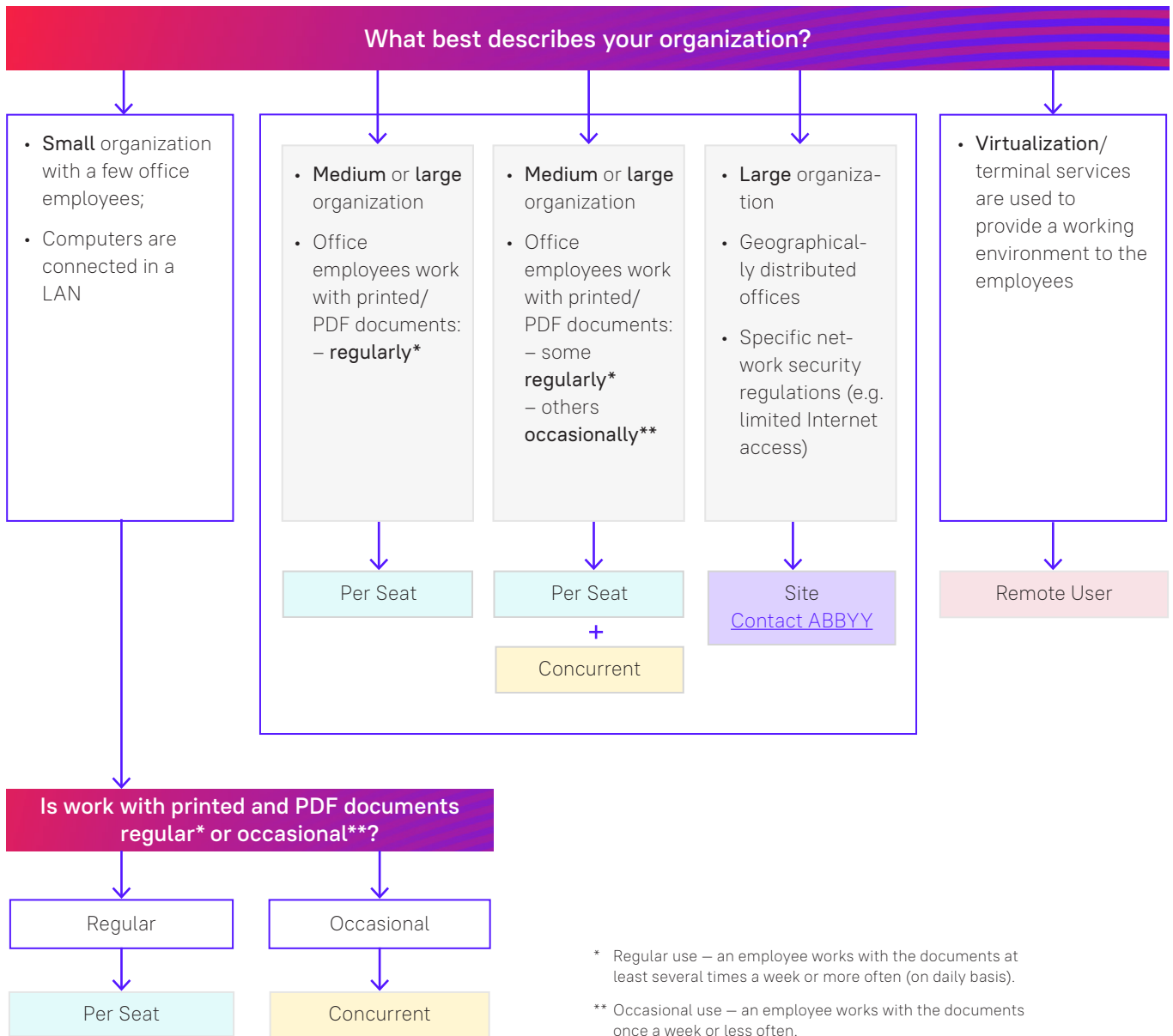
Editions:	Standard	Corporate									
Capabilities:	<ul style="list-style-type: none"> • Edit, protect, and collaborate on PDFs • Create and convert PDFs • Digitize paper documents and scans with OCR 	<ul style="list-style-type: none"> • Edit, protect, and collaborate on PDFs • Create and convert PDFs • Digitize paper documents and scans with OCR • Compare documents • Automate digitization and conversion routines (5,000 pages per month, 2 cores) 									
License types available:	<table border="1"> <tr><td>Standalone</td></tr> <tr><td>Per Seat</td></tr> <tr><td>Remote User</td></tr> <tr><td>Site</td></tr> </table>	Standalone	Per Seat	Remote User	Site	<table border="1"> <tr><td>Standalone</td></tr> <tr><td>Per Seat</td></tr> <tr><td>Concurrent</td></tr> <tr><td>Remote User</td></tr> <tr><td>Site</td></tr> </table>	Standalone	Per Seat	Concurrent	Remote User	Site
Standalone											
Per Seat											
Remote User											
Site											
Standalone											
Per Seat											
Concurrent											
Remote User											
Site											
Volume Licensing Program:	Volume discounts and more										

Licenses for Organizations: Overview

ABBYY offers different license types for FineReader PDF to meet requirements of organizations of any size to purchase, install, and manage software.

	Per Seat	Concurrent	Remote User	Site
Licensed per:	Workstation	Number of workstations, simultaneously using FineReader PDF	Named User	Licensed per workstation
Distinctive features:	<ul style="list-style-type: none"> can be installed and used on as many workstations as the number of licenses purchased 	<ul style="list-style-type: none"> can be installed on unlimited number of workstations in LAN can be used simultaneously only on as many workstations as the number of licenses purchased 	<ul style="list-style-type: none"> can be installed on terminal servers and server farms in virtualized environments can be used only by as many named users as the number of licenses purchased 	<ul style="list-style-type: none"> can be installed and used on as many workstations as the number of licenses purchased no activation required
Entry point:	min. 5 licenses	min. 5 licenses	min. 5 licenses	min. 50 licenses
Available for:	FineReader PDF Standard FineReader PDF Corporate	FineReader PDF Corporate	FineReader PDF Standard FineReader PDF Corporate	FineReader PDF Standard FineReader PDF Corporate

Which License Type Is Best for Your Organization?

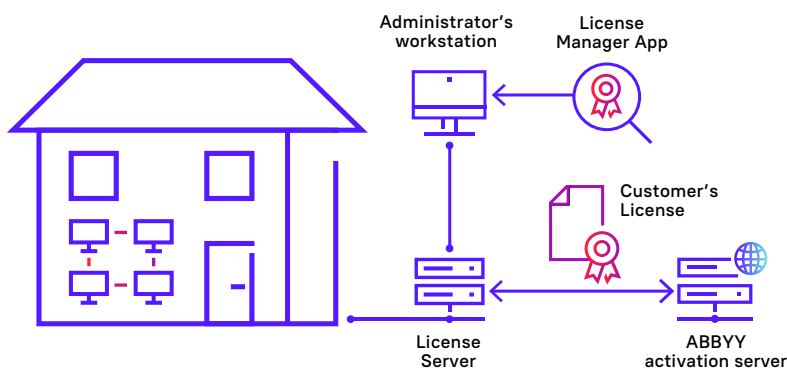


Some Definitions

License – an authorization that grants the right to use FineReader PDF by one user and/or on one workstation (depending on the license type).

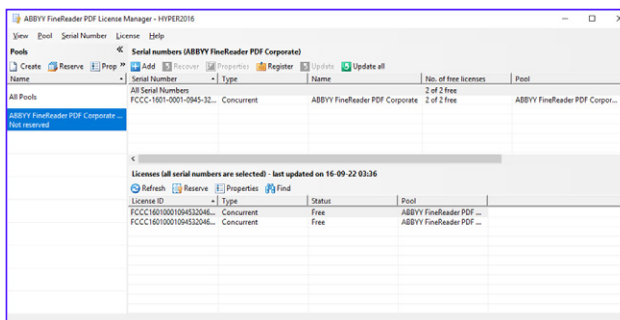
Serial number – a unique set of letters and numbers that identifies the license or set (a number) of licenses of the same type and can be used to activate FineReader PDF.

Activation – the process of verifying that your serial number is valid and has not been activated on more computers than defined by the scope of your License. Activation normally requires Internet access.



License Server – a component installed on a LAN server. The License Server controls usage of licenses on workstations within the LAN.

License Manager – an application which enables the administrator to manage licenses. The administrator can enter serial numbers, activate licenses, assign licenses to specific workstations in the local area network, and check which licenses are in use at the moment.



Standalone: Individual License



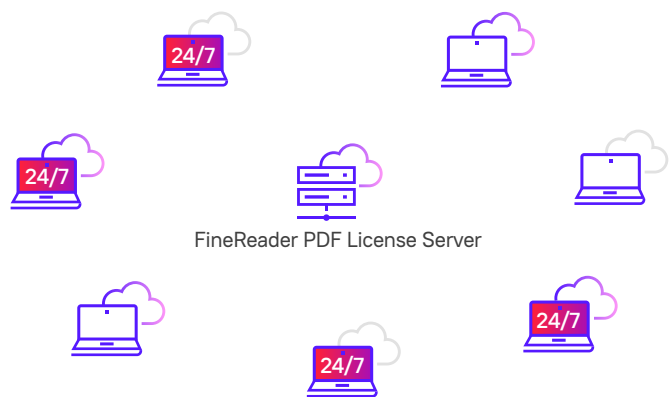
Use case

- For individual professionals.
- For local installation on a PC.

Description	Standalone, single user license; for individual users
Available for	FineReader PDF Standard, FineReader PDF Corporate
Usage limit	1 user, 1 computer*
Available through	ABBYY online shop ABBYY partner channel
Installation & Activation	Local installation only Activation binds the license to the computer
Serial number options	A serial number for one license, i.e. one computer
Main advantage	Straightforward installation
Limitations	Not recommended for companies and organizations: <ul style="list-style-type: none"> • Does not support network deployment and management • No volume licensing available

* for more details, see End User License Agreement for FineReader PDF

Per Seat: Multiple User License



FineReader PDF 24/7: these workstations can run FineReader PDF anytime, even disconnected from the LAN

Use case

- For employees in an organization of any size with a regular need to work with documents.
- For employees in an organization of any size working remotely or outside the office (i.e., when having no direct connection to the organization’s LAN).

Description	For companies and organizations. Supports both automated deployment and standalone installation on workstations. For multiple users.		
Available for	FineReader PDF Standard, FineReader PDF Corporate		
Usage limit	One workstation installation and use per license. Number of workstations on which FineReader PDF can be installed and used equals to the number of Per Seat licenses purchased.		
Available through	ABBYY partner channel		
	Available options:		
Installation & Activation	Roll out on workstations with automatic activation first launch of the software on the workstation	Network installation with activation in License Manager	Local installation with manual activation on every workstation (not recommended)
Serial number options	One serial number for a set of licenses, i.e., for a number of workstations	<ul style="list-style-type: none"> • Separate serial numbers for each license, i.e., one per workstation (“seat”) • One serial number for a set of licenses, i.e., for a number of workstations (default, recommended) 	
LAN deployment and license management	Supported		
Main advantage	<ul style="list-style-type: none"> • Volume discounts via ABBYY Corporate plus License Program • Easy license management and software administration, ability to move licenses between workstations • Option of deployment with automatic activation on multiple workstations • Each license is assigned to a workstation, FineReader PDF is always accessible for use; no connection to a LAN required 		

* for more details, see End User License Agreement for FineReader PDF

Per Seat: Important to Know When Selecting an Installation Option

Roll-out on workstations with automatic activation

- Allows easy deployment of FineReader PDF across multiple LANs.
- One serial number for a set of licenses is used.
- Internet access is required for all workstations to perform automatic activation.

Network installation with activation in License Manager

- Works only within the same LAN.
- Internet connection on workstations is not required.
- Internet connection is required for License Manager and License Server only.

Local installation with individual activation on every workstation (not recommended)

Consider it only if:

- the number of installations is small
- there is no LAN to make network installation

Per Seat: Installation and Activation Stages

Roll-out on workstations with automatic activation

- 1 Create an Automatic Activation Package (can be done by ABBYY or by customer's System Administrator).
- 2 Install the package on workstations (Alternative to 1 and 2). Administrator installs regular package with serial number as a command line parameter.
- 3 Upon the first launch of the installed product, it will be automatically activated via Internet (Internet connection required*).

Network installation with activation via the License Manager

- 1 Install License Server and License Manager.
- 2 Create administrative installation point.
- 3 Open License Manager, enter serial number(s), and activate licenses.
- 4 Install the software on workstations from the installation point.

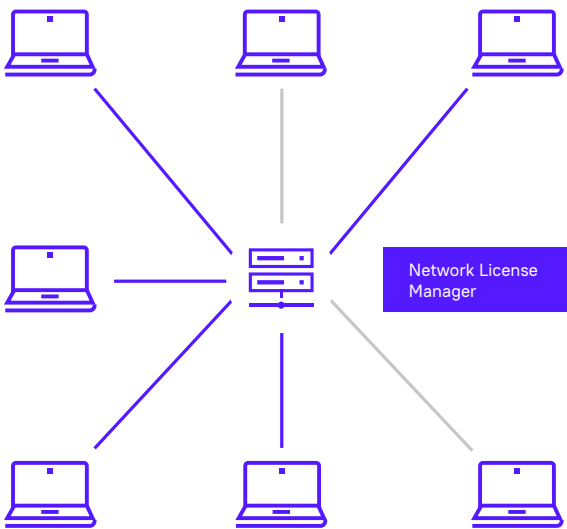
Local installation with individual activation on every workstation

- 1 Install on each individual workstation locally.
- 2 Activate on every workstation individually by entering serial number.

See detailed instructions in [ABBYY FineReader PDF System Administrator's Guide](#).

* If there is no Internet connection, FineReader PDF can be activated via e-mail

Concurrent: Network License



Install on any PCs within the network – several users share one licence.

Use case

- For employees in a mid-size to large organization working with documents occasionally and having computers permanently connected to the LAN. (Can be combined with Per Seat licenses for the employees working with documents regularly.)
- For small (a few employees) companies looking for the most cost-effective solution to provide every employee with access to FineReader PDF.

How it works

- Concurrent licenses aren't bound to specific workstations permanently. The License Manager dynamically assigns Concurrent licenses to those workstations that are running FineReader PDF at the moment.
- Once FineReader PDF is running on as many workstations as the number of licenses purchased, no other workstation can run the software until any of the licenses becomes free once a user closes the application.

Concurrent: Network License

Description	For companies and organizations. Shared (floating) network license. For multiple users.
Available for	FineReader PDF Corporate
Usage limit	FineReader PDF can be installed on any number of workstations in the LAN. Number of Concurrent licenses limits the number of users who can work with FineReader PDF simultaneously.
Available through	ABBYY partner channel
Installation & Activation	Network installation with activation in License Manager
Serial number options	<ul style="list-style-type: none"> • Separate serial numbers for each license, i.e., each serial number adds one simultaneous user • One serial number for a set of licenses, i.e., for a number of simultaneous users (default, recommended)
LAN deployment and license management	Supported
Main advantage	<ul style="list-style-type: none"> • Easy license management and software administration within an organization • Volume discounts through ABBYY Corporate plus License Program
Limitations:	<ul style="list-style-type: none"> • Doesn't provide permanent access to FineReader PDF on every workstation • To use FineReader PDF, users may have to wait for a license to get free • Requires direct connection to the LAN for use. Not suitable for those who may work outside of corporate network.

Concurrent License: Installation and Activation Stages

Network installation with activation in License Manager

What to consider:

- All workstations must be in the same LAN.
- Workstations must have connection to the License Server via the LAN all the times.
- An Internet connection is required for the License Server only.

- 1 Install License Server and License Manager.
- 2 Create administrative installation point.
- 3 Open License Manager, enter serial number(s), and activate licenses.
- 4 Install the software on workstations from the installation point.

Concurrent Licenses — FAQ

Q: For how many employees is one Concurrent license suitable?

A: There are no technical limitations. However, there are practical ones, and they may vary depending on how often employees work with documents and in which amounts. Also, the more people need to share one Concurrent license, the higher are the chances of conflicts.

ABBYY's experience is that on average, **one Concurrent license** may be suitable for **3 to 5 employees** with occasional need to work with documents.

Q: Why Per Seat licenses are more universal for the most of organizations than the Concurrent ones?

A: Specifics of technical realization of Concurrent licenses make them not suitable for these categories of users:

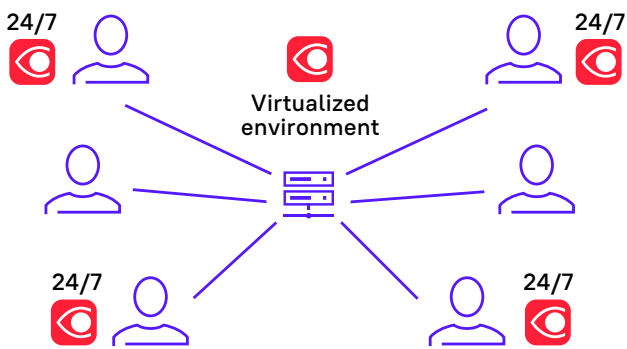
- Those who work with documents regularly
- Those working remotely or travelling

ABBYY recommends Per Seat licenses as the primary type for organizations, while Concurrent licenses, if there are valid reasons for using them, can be used in addition to Per Seat ones.

Q: Can I install Concurrent licenses using automatic activation?

A: No, it's not possible technically.

Remote User: License for Virtualized Environments



FineReader PDF 24/7: these users can run FineReader PDF anytime via remote connection or application virtualization

Use case

Companies and organizations that use terminal services, desktop, and/or application virtualization solutions as a primary means to provide employees with a working environment.

Description	For companies and organizations. For using FineReader PDF with virtualization solutions. Supports desktop and application virtualization.
Available for	FineReader PDF Standard, FineReader PDF Corporate
Usage limit	FineReader PDF can be installed on multiple servers (server farm). The license specifies the maximum number of users in the virtual environment that can use FineReader PDF. The license is assigned to specific user names (Domain\UserName).
Available through	ABBYY partner channel
Installation & Activation	Network installation with activation in License Manager
Serial number options	One serial number for a set of licenses, i.e., for a number of users (clients)
LAN deployment and license management	Supported. The users are managed (assigned, removed) in License Manager.
Main advantage	<ul style="list-style-type: none"> • Volume discounts through ABBYY Corporate plus License Program • Easy license and user management • Provides permanent FineReader PDF availability to the users
Limitations	Application streaming is not supported

Remote User License: Installation and Activation Stages

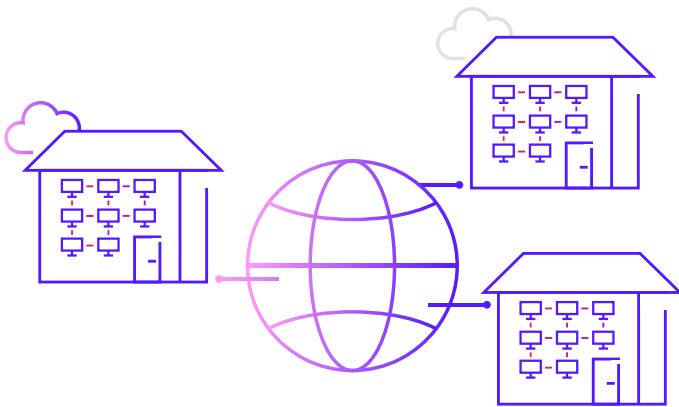
Network installation on a terminal server farm with activation in License Manager

What to consider:

- The License Server and the License Manager can be installed on any computer in the same LAN.
- The License Server should be installed on a computer that is always accessible to all servers in the farm running ABBYY FineReader PDF.
- The License Server can be installed on one of the terminal servers.

- 1 Install License Server and License Manager.
- 2 Create administrative installation point.
- 3 Open License Manager, enter serial number(s) and activate licenses.
- 4 Install the software on all servers in the server farm from the installation point.
- 5 (If required) Set up Windows RemoteApp or Citrix Workspace App.

Site: Open License for Large Organizations



Use cases:

- Large organizations with geographically distributed offices, specific network security regulations (e.g., limited access to the Internet or LAN resources on workstations).
- Large organizations with very high number of users/workstations that require FineReader PDF.

Description	License that requires no activation. Site license usage is regulated by a clause of the End User License Agreement. Named distributive package. For large companies, multiple offices, and organizations with strict network security regulations.
Available for	FineReader Standard, FineReader Corporate
Usage limit	FineReader can be installed and used on as many computers within the customer organization as stipulated in the invoice and the License Certificate. Not more than one instance of the software can be run on any of the computers. The software can be removed from one computer and installed on another.
Available through	<ul style="list-style-type: none"> • ABBYY partner channel Minimum volume is for 50 computers
Installation & Activation	Automated roll-out over LAN and HDD cloning are supported. Local installation is not recommended. No activation is required.
Serial number options	One serial number for a number of workstations, embedded into the distribution package.
LAN deployment and license management	LAN deployment is supported. LAN license management is not supported.
Main advantages	<ul style="list-style-type: none"> • Volume discounts through the ABBYY Corporate plus License Program • Simple software management across a large number of computers or under network security restrictions by LAN deployment supported and no need in any activation procedures • Provides permanent FineReader availability to the users

License Types for Organizations: Comparison

	Per Seat	Concurrent	Remote User	Site
Number of users:	Equal to number of licenses purchased	Max. number of simultaneous users equals the number of licenses purchased	Equal to number of licenses purchased	Defined by the invoice and the License Certificate.
Usage frequency:	Regular	Occasional	Any	Any
Connection to network:	Not required	Required	Required	Not required
Installation:	<p>Network installation:</p> <ul style="list-style-type: none"> with automatic activation on the workstations with activation in network License Manager <p>Local installation:</p> <ul style="list-style-type: none"> with manual activation on every workstation (not recommended) 	<ul style="list-style-type: none"> Network installation with activation in network License Manager and deployment onto workstations 	<ul style="list-style-type: none"> Network installation with activation in network License Manager and deployment onto terminal server(s) 	<ul style="list-style-type: none"> Any method of automated roll-out over LAN HDD cloning Local installation (not recommended)
Serial numbers:	<ul style="list-style-type: none"> one for a set of licenses separate per each license 	<ul style="list-style-type: none"> one for a set of licenses separate per each license 	<ul style="list-style-type: none"> one for a set of licenses 	Embedded into the custom distributive package
Activation:	<ul style="list-style-type: none"> on workstation* on LAN server 	<ul style="list-style-type: none"> on LAN server 	<ul style="list-style-type: none"> On server 	Not needed
License management:	Supported, using ABBYY License Manager	Supported, using ABBYY License Manager	Supported, using ABBYY License Manager	Not applicable

* normal or silent activation. "Silent" activation starts at first launch of the software on the workstation (without user interaction)

License Types Compatibility

Q: Can we use different license types in one local network?

A: Yes, you can use Per Seat, Remote User, and Concurrent licenses in one network.

Q: Can one License Manager manage different FineReader PDF license types?

A: Yes, Per Seat, Remote User, and Concurrent.

Q: Can one License Manager manage different versions of FineReader? (e.g., FineReader PDF 15 and FineReader PDF 16)?

A: No. License Manager applications used for each FineReader version are different and aren't interchangeable.

Q: Can one License Manager manage licenses of different FineReader PDF editions?

A: Yes.

FineReader PDF Trial Licenses

	Single-user Trial	Licensing Trial
Audience:	For individual users	For companies and organizations
Purpose:	<ul style="list-style-type: none"> test functionality 	<ul style="list-style-type: none"> test functionality test licensing and deployment within customer’s infrastructure
Availability:	From ABBYY and partners’ websites	By request, from ABBYY or through the partners
License type:	Standalone	Concurrent, Remote User, or Per Seat
LAN installation:	Not available	Supported
Limitations:	7 days, 100 pages to convert	30 days, 5 licenses, 100 pages to convert each
Functionality corresponds to:	FineReader PDF Corporate	FineReader PDF Corporate
How to get:	Download	Request

Any FineReader PDF trial is free of charge and fully functional.



Contact us: [Request FineReader PDF volume offer](#)

© 2022 ABBYY Europe GmbH. ABBYY FineReader © 2022 ABBYY Development Inc. ABBYY and ABBYY FineReader are either registered trademarks or trademarks of ABBYY Development Inc. and/or its affiliates. These designations can also be logos, product or company names (or part of any of the above) of ABBYY Development Inc. and/or its affiliates and may not be used without consent of their respective owners. #14988